



**India Meteorological Department
(Ministry of Earth Sciences)**

NATIONAL BULLETIN NO. 8 (ARB/03/2023)

TIME OF ISSUE: 1700 HOURS IST

DATED: 21.10.2023

FROM: INDIA METEOROLOGICAL DEPARTMENT (FAX NO. 24643965/24699216/24623220)

TO: CONTROL ROOM, NDM, MINISTRY OF HOME AFFAIRS (FAX.NO. 23093750)

CONTROL ROOM NDMA (FAX.NO. 26701729)

CABINET SECRETARIAT (FAX.NO.23012284, 23018638)

PS TO HON'BLE MINISTER FOR S & T AND EARTH SCIENCES (FAX NO.23316745)

SECRETARY, MOES (FAX NO. 24629777)

H.Q. (INTEGRATED DEFENCE STAFF AND CDS) (FAX NO. 23005137/23005147)

DIRECTOR GENERAL, DOORDARSHAN (23385843)

DIRECTOR GENERAL, AIR (23421105, 23421219)

PIB MOES (FAX NO. 23389042)

UNI (FAX NO. 23355841)

D.G. NATIONAL DISASTER RESPONSE FORCE (NDRF) (FAX NO. 26105912, 2436 3260)

DIRECTOR, PUNCTUALITY, INDIAN RAILWAYS (FAX NO. 23388503)

ADMINISTRATOR, LAKSHADWEEP ISLANDS (FAX NO. 0413-262184)

CHIEF SECRETARY, KERALA (FAX NO. 0471-2327176)

CHIEF SECRETARY, KARNATAKA (FAX NO. 080-22258913)

CHIEF SECRETARY, GOA (FAX NO. 0832-2415201)

CHIEF SECRETARY, MAHARASHTRA (FAX NO. 022- 22028594)

CHIEF SECRETARY, GUJARAT (FAX NO. 079-23250305)

CHIEF SECRETARY, DAMAN & DIU (FAX NO. 0260-2230775)

CHIEF SECRETARY, DADRA & NAGAR HAVELI (FAX NO. 0260-2645466)

CHIEF SECRETARY, ODISHA (FAX NO. 0674-2536660)

CHIEF SECRETARY, WEST BENGAL (FAX NO. 033-22144328)

CHIEF SECRETARY, ANDHRA PRADESH (FAX NO. 0863-2441029, 08645-246600)

CHIEF SECRETARY, TAMIL NADU (FAX NO 044-25672304)

CHIEF SECRETARY, PUDUCHERRY (FAX NO 0413-2334145)

CHIEF SECRETARY, GOVT. OF TRIPURA (FAX NO. 0381-2414013, 2413200)

CHIEF SECRETARY, GOVT. OF MIZORAM (FAX NO. 0389-2322745, 2320588)

CHIEF SECRETARY, GOVT. OF MANIPUR (FAX NO. 0385-2452629)

CHIEF SECRETARY, GOVT. OF NAGALAND (FAX NO. 0370-2270057)

ADMINISTRATOR, ANDAMAN & NICOBAR ISLANDS (FAX NO. 03192- 232656)

Sub: (A) Severe Cyclonic Storm "Tej" (pronounced as Tej) over southwest Arabian Sea

(B) Well Marked Low pressure Area over southeast and adjoining central Bay of Bengal

(A) Severe Cyclonic Storm "Tej" (pronounced as Tej) over southwest Arabian Sea

The Severe Cyclonic Storm "Tej" (pronounced as Tej) over southwest Arabian Sea moved west-northwestwards with a speed of 16 kmph during past 6 hours and lay centered at 1430 hours IST of 21st October over the same region, near latitude 10.2°N and longitude 57.9°E about 510 km east-southeast of Socotra (Yemen), 860 km south-southeast of Salalah (Oman) and 900 km southeast of Al Ghaidah (Yemen).

It is very likely to intensify further into a very severe cyclonic storm during next 24 hours. It is very likely to move west-northwestwards till 22nd morning, northwestwards thereafter till 24th morning & then north-northwestwards. It is likely to cross Yemen-Oman coasts between Al Ghaidah (Yemen) & Salalah (Oman) around early morning of 25th October.

Forecast track and intensity are given below:

Date/Time(IST)	Position (Lat. °N/ long. °E)	Maximum sustained surface wind speed (Kmph)	Category of cyclonic disturbance
21.10.23/1430	10.2/57.9	90-100 gusting to 110	Severe Cyclonic Storm
21.10.23/1730	10.6/57.5	95-105 gusting to 115	Severe Cyclonic Storm
21.10.23/2330	11.1/56.9	105-115 gusting to 125	Severe Cyclonic Storm
22.10.23/0530	11.7/56.3	110-120 gusting to 135	Very Severe Cyclonic Storm
22.10.23/1130	12.2/55.8	130-140 gusting to 155	Very Severe Cyclonic Storm
22.10.23/2330	13.1/54.8	140-150 gusting to 165	Very Severe Cyclonic Storm
23.10.23/1130	14.0/54.0	150-160 gusting to 175	Very Severe Cyclonic Storm
23.10.23/2330	14.6/53.6	140-150 gusting to 165	Very Severe Cyclonic Storm
24.10.23/1130	15.4/53.2	130-140 gusting to 155	Very Severe Cyclonic Storm
24.10.23/2330	16.3/52.9	115-125 gusting to 140	Very Severe Cyclonic Storm
25.10.23/1130	17.0/52.8	90-100 gusting to 110	Severe Cyclonic Storm
25.10.23/2330	17.7/52.7	50-60 gusting to 70	Deep Depression
26.10.23/1130	18.4/52.7	30-40 gusting to 50	Well Marked Low

Warnings:

(i) Wind warning (warning graphics enclosed):

• **Southwest Arabian Sea:**

Gale wind speed reaching 90-100 kmph gusting to 110 kmph is prevailing and likely to increase gradually becoming **110-120 kmph gusting to 135 kmph** by morning of 22nd October. Thereafter, it is likely to decrease gradually becoming **Gale wind speed reaching 60-70 kmph gusting to 80 kmph** by morning of 23rd and **Squally wind speed reaching 50-60 kmph gusting to 70 kmph** by morning of 24th October. It would decrease gradually thereafter.

• **Westcentral Arabian Sea:**

Squally wind speed reaching 55-65 kmph gusting to 75 kmph is prevailing and likely to become **Gale wind speed reaching 80-90 kmph gusting to 100 kmph** by evening of 21st October. It is likely to increase gradually becoming **Gale wind speed reaching 110-120 kmph gusting to 135 kmph** in the morning of 22nd, **150-160 kmph gusting to 175 kmph** in the morning of 23rd October. Thereafter, it is likely to decrease gradually from evening of 23rd October becoming **Gale wind speed reaching 135-145 kmph gusting to 160 kmph** by 24th morning and **90-100 kmph gusting to 110 kmph** on 25th morning. It would decrease rapidly after the landfall becoming **Squally wind speed reaching 50-60 kmph gusting to 70 kmph** in the night of 25th October and **Squally wind speed reaching 30-40 kmph gusting to 50 kmph** by morning of 26th October.

(ii) Sea Condition

• **Southwest Arabian Sea:**

High sea condition is prevailing and likely to become **phenomenal** from morning of 22nd to morning of 23rd October. It is likely to improve gradually becoming **very high** from 24th morning and continue till 25th morning. Thereafter, it would improve gradually.

• **Westcentral Arabian Sea:**

High sea condition is prevailing and likely to become **phenomenal** from 22nd morning to night of 24th October. It would improve gradually thereafter becoming **very high to high** from 25th morning. Thereafter, it would improve gradually.

(iii) Fishermen Warning (Graphics attached):

Fishermen are advised not to venture into

- ❖ **Southwest Arabian Sea** till 25th October.
- ❖ **Westcentral Arabian Sea** till 26th October.
- ❖ Those out at sea are advised to return to coast.

(B) Well Marked Low pressure Area over westcentral and adjoining south Bay of Bengal

The well marked low pressure area over southeast and adjoining central Bay of Bengal moved slowly northwestwards and lay over westcentral and adjoining south Bay of Bengal at 1430 hours IST of 21st October, 2023. It is very likely to move further northwestwards and intensify into a depression over westcentral Bay of Bengal by 22nd October. Thereafter, it is likely to move north-northeastwards towards Bangladesh and adjoining West Bengal coasts and intensify further during subsequent 3 days.

Warnings:

(i) Rainfall Warning

Nagaland, Manipur, Mizoram & Tripura: Light to moderate rainfall at most places with isolated heavy rainfall is likely on 24th and 25th October.

Coastal Districts of Odisha: Light to moderate rainfall at a few places is likely on 23rd and at many places on 24th & 25th October.

Coastal Districts of West Bengal: Light to moderate rainfall at many places is likely on 24th and 25th October.

(ii) Wind warning (warning graphics enclosed):

- **Southeast and adjoining eastcentral & southwest Bay of Bengal:** **Squally wind** speed reaching **45-55 kmph gusting to 65 kmph** is likely to prevail near the system on 21st & 22nd and **50-60 kmph gusting to 70 kmph** on 23rd October. It is likely to decrease gradually thereafter.
- **Westcentral Bay of Bengal:** **Squally wind** speed reaching **40-50 kmph gusting to 60 kmph** is likely to prevail on 21st October. It is likely to gradually increase becoming **45-55 kmph gusting to 65 kmph** on 22nd and **50-60 kmph gusting to 70 kmph** on 23rd & 24th October.
- **North Bay of Bengal and along & off Odisha, West Bengal and Bangladesh coasts:** **Squally wind** speed reaching **45-55 kmph gusting to 65 kmph** is likely to prevail from 24th to 26th October.

(iii) Sea Condition

- **Southeast and adjoining eastcentral & southwest Bay of Bengal:** **Moderate to rough sea condition** is likely to prevail near the system on 21st and it is likely to become **rough to very rough** on 23rd October. It is likely to improve gradually thereafter.
- **Westcentral Bay of Bengal:** **Rough sea condition** is likely to prevail on 21st October. It is likely to become **rough to very rough** from 23rd October.
- **North Bay of Bengal and along & off Odisha, West Bengal and Bangladesh coasts:** **Rough to very rough** sea condition is likely from 24th to 26th October.

(iv) Fishermen Warning (Graphics attached):

Fishermen are advised not to venture into

- ❖ **Southeast and adjoining eastcentral & southwest Bay of Bengal** till 23rd October.
- ❖ **Westcentral Bay of Bengal** from 21st October onwards.
- ❖ **North Bay of Bengal and along & off Odisha, West Bengal and Bangladesh coasts** from 24th to 26th October.

Those out at sea are advised to return to coast.

Both the systems are under continuous surveillance and the next bulletin will be issued at 2030 hours IST of today, the 21st October, 2023.

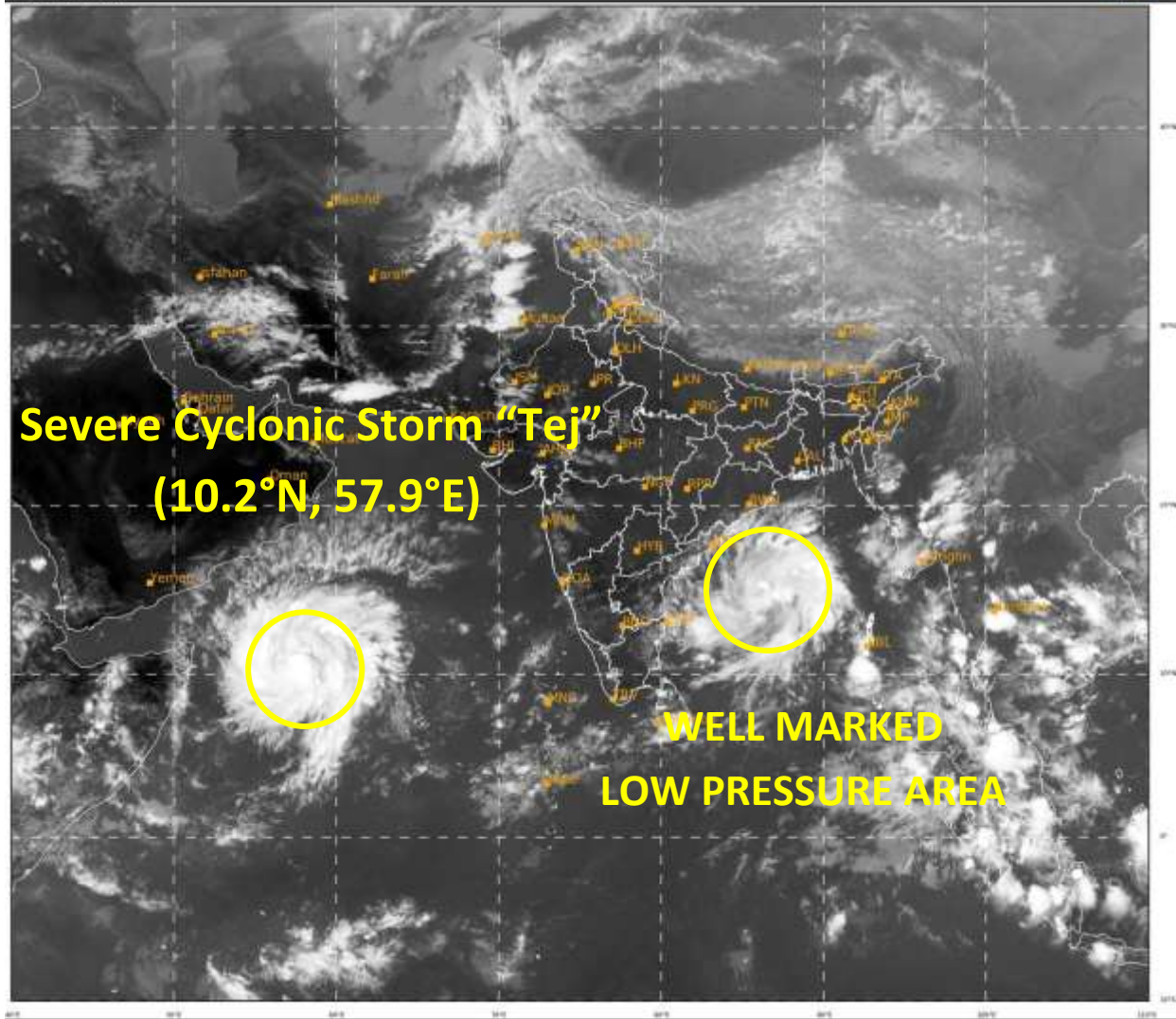
(Ananda Kumar Das)

Scientist F, Cyclone Warning, New Delhi

Copy to: ACWC Mumbai/ ACWC Chennai/ ACWC Kolkata/CWC Ahmedabad/CWC Bhubaneswar/CWC Vishakhapatnam/CWC Thiruvananthapuram/MC Goa

Spatial rainfall distribution: Isolated: <25%, A few: 26-50%, Many: 51-75%, Most: 76-100%

Rainfall amount (mm): Heavy rain: 64.5 – 115.5, Very heavy rain: 115.6 – 204.4, Extremely heavy rain: 204.5 or more.



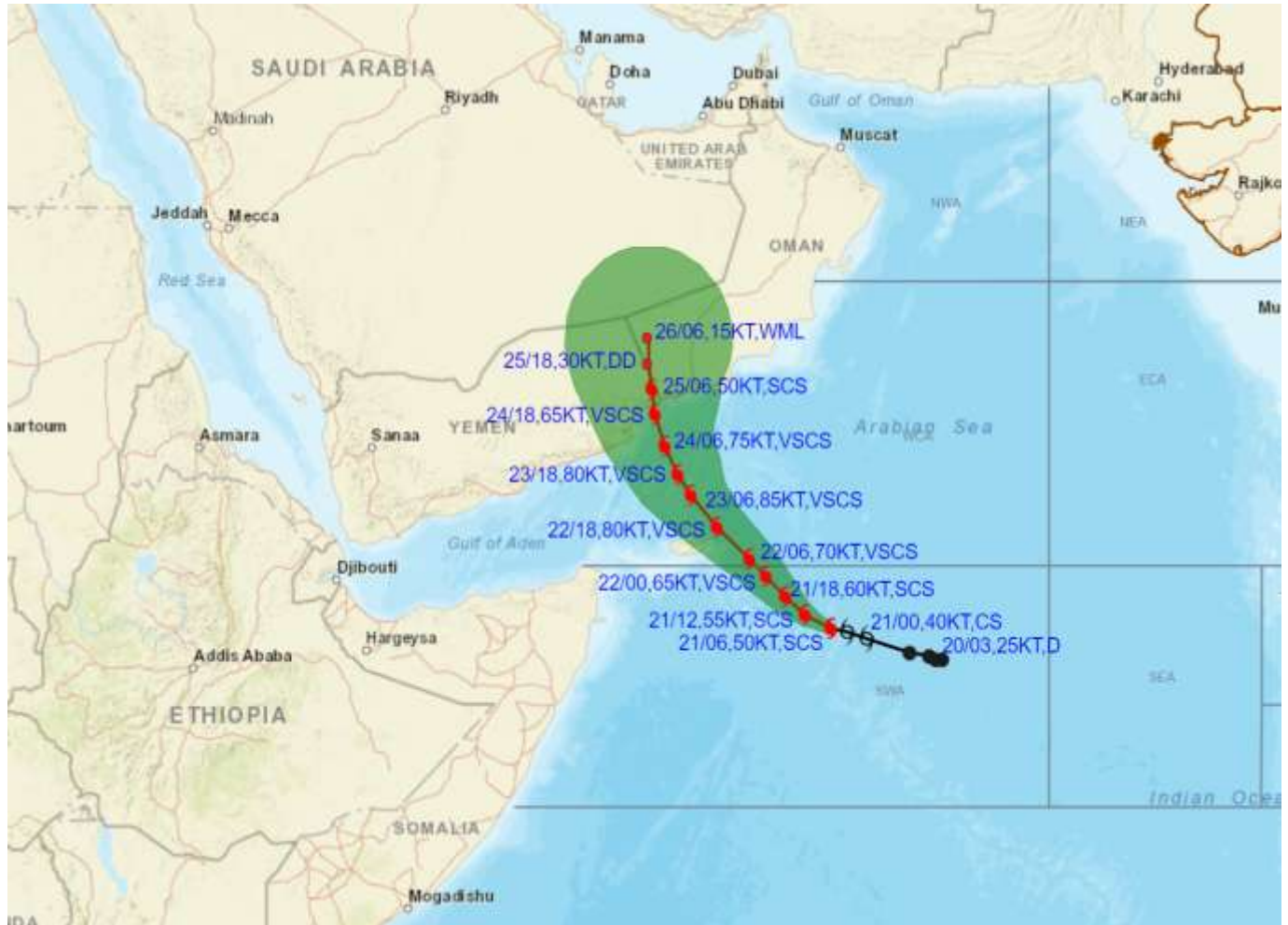
402

944

IMD, DELHI



OBSERVED AND FORECAST TRACK ALONGWITH CONE OF UNCERTAINTY OF CYCLONIC STORM "TEJ" OVER SOUTHWEST ARABIAN SEA BASED ON 0600 UTC (1130 IST) OF 21st OCTOBER 2023.



DATE/TIME IN UTC

IST=UTC + 0530

L: LOW PRESSURE AREA

WML: WELL MARKED LOW PRESSURE AREA

D: DEPRESSION (17-27 KT)

DD: DEEP DEPRESSION (28-33 KT)

CS: CYCLONIC STORM (34-47 KT)

SCS: SEVERE CYCLONIC STORM (48-63KT)

VSCS: VERY SEVERE CYCLONIC STORM (64-89 KT)

ESCS: EXTREMELY SEVERE CYCLONIC STORM (90-119 KT)

SuCS: SUPER CYCLONIC STORM (\geq 120 KT)

LESS THAN 34 KT

34-47 KT

\geq 48 KT

OBSERVED TRACK

FORECAST TRACK

CONE OF UNCERTAINTY



OBSERVED AND FORECAST TRACK ALONGWITH QUADRANT WIND DISTRIBUTION OF CYCLONIC STORM "TEJ" OVER SOUTHWEST ARABIAN SEA BASED ON 0600 UTC (1130 IST) OF 21st OCTOBER 2023.



DATE/TIME IN UTC

IST=UTC + 0530

L: LOW PRESSURE AREA

WML: WELL MARKED LOW PRESSURE AREA

D: DEPRESSION (17-27 KT)

DD: DEEP DEPRESSION (28-33 KT)

CS: CYCLONIC STORM (34-47 KT)

SCS: SEVERE CYCLONIC STORM (48-63KT)

VSCS: VERY SEVERE CYCLONIC STORM (64-89 KT)

ESCS: EXTREMELY SEVERE CYCLONIC STORM (90-119 KT)

SuCS: SUPER CYCLONIC STORM (\geq 120 KT)

● LESS THAN 34 KT

○ 34-47 KT

● \geq 48 KT

— OBSERVED TRACK

— FORECAST TRACK

— CONE OF UNCERTAINTY

AREA OF MAXIMUM SUSTAINED WIND SPEED:

— 28-33 KT (52-61 KMPH)

— 34-49 KT (62-91 KMPH)

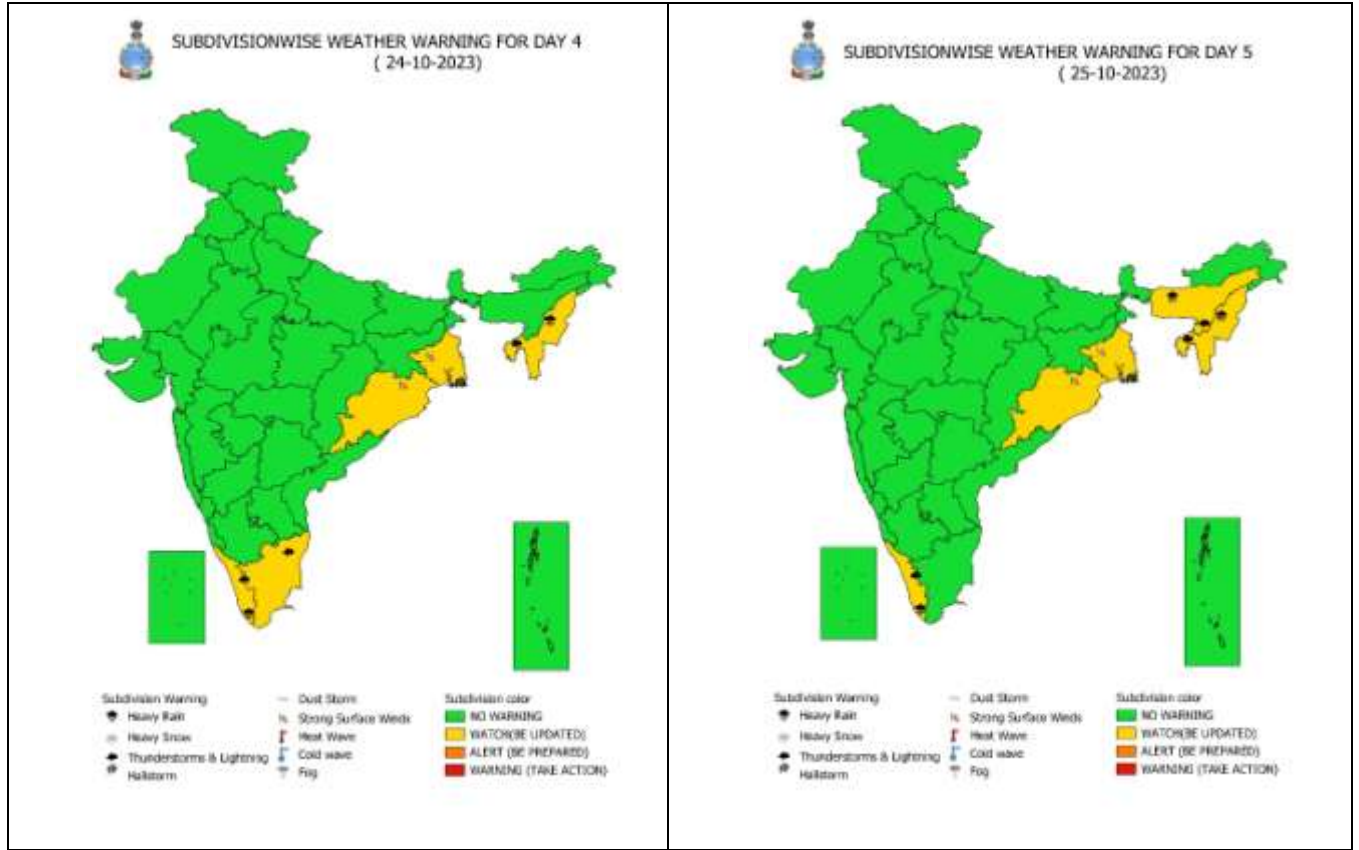
— 50-63 KT (92-117 KMPH)

— \geq 64 KT (\geq 118 KMPH)

IMPACT OVER THE SEA

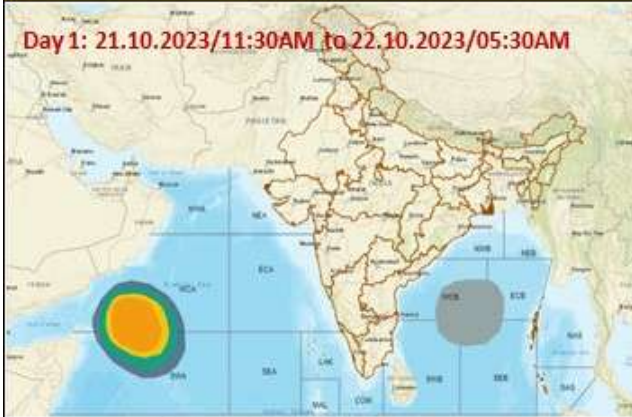
MSW (knot/kmph)	Impact	Action
28-33 (52-61)	Very rough seas	Total suspension of fishing operations
34-49 (62-91)	High to very high seas	Total suspension of fishing operations
50-63 (92-117)	Very high seas	Total suspension of fishing operations
\geq 64 (\geq 118)	Phenomenal	Total suspension of fishing operations

WEATHER WARNING GRAPHICS



Fishermen warning graphics

Day 1: 21.10.2023/11:30AM to 22.10.2023/05:30AM



Day 2: 22.10.2023/05:30AM to 23.10.2023/05:30AM



Day 3: 23.10.2023/05:30AM to 24.10.2023/05:30AM



Day 4: 24.10.2023/05:30AM to 25.10.2023/05:30AM



Day 5: 25.10.2023/05:30AM to 26.10.2023/05:30AM



- | | |
|--|--|
| | Squally WX with wind speed 40-45 kmph gusting to 55 kmph |
| | Squally WX with wind speed 45-55 kmph gusting to 65 kmph |
| | Squally wind with speed 50-60 kmph gusting to 70 kmph |
| | CS with Gale wind speed 60-90 kmph gusting to 110 kmph |
| | SCS with Gale wind speed 90-110 kmph gusting to 120 kmph |
| | VSCS with Gale wind speed 110-160 kmph gusting to 175 kmph |

Fishermen are advised not to venture into the marked areas.